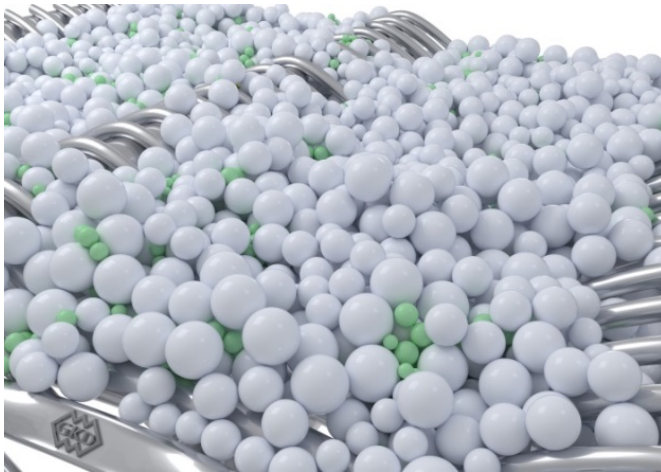


GKD: Proven innovation expertise

Saltwater-proof 24 µm mesh proves a visitor magnet



WORLD WIDE WEAVE



Picture 1: The discussions primarily focused on the saltwater-proof mesh from the Porometric range from GKD with a pore opening of 24 µm and three times greater permeability than conventional fabrics.



Picture 2: The highly permeable saltwater-proof weave with a pore opening of 24 µm from GKD can be used in all standard cartridge filters for ballast water filtration.

Bild 1-4 © GKD

We will be happy to send you the desired images in printable resolution by e-mail.

These images are meant exclusively for use in connection with this particular press release on the company GKD – GEBR. KUFFERATH AG. Any other use beyond this expressed purpose, especially use in connection with other companies, is strictly prohibited.

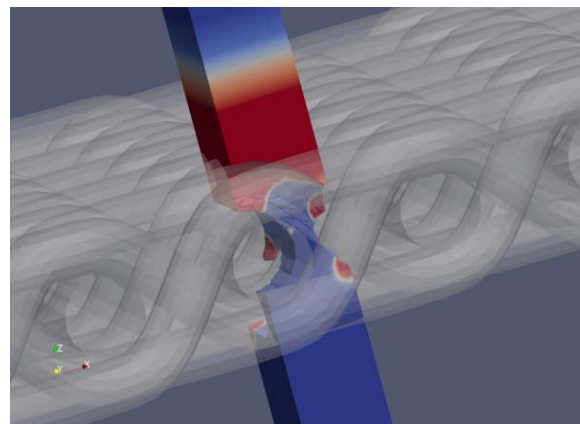
impetus.PR

Agentur für Corporate Communications GmbH

Ursula Herrling-Tusch
Charlottenburger Allee 27-29
D-52068 Aachen
Tel: +49 [0] 241 / 1 89 25-10
Fax: +49 [0] 241 / 1 89 25-29
E-Mail: herrling-tusch@impetus-pr.de



Picture 3: The topic of numeric simulation of the bubble point attracted a great deal of interest among the sector visitors at FILTECH.



Picture 4: To measure the pore diameter, GKD developed a process that uses a multi-phase simulation model with numerical tools to determine the capillary pressure constant.

GKD – GEBR. KUFFERATH AG, Düren