

Paris Expo Porte de Versailles: Metal fabric sail for Pavilion 1



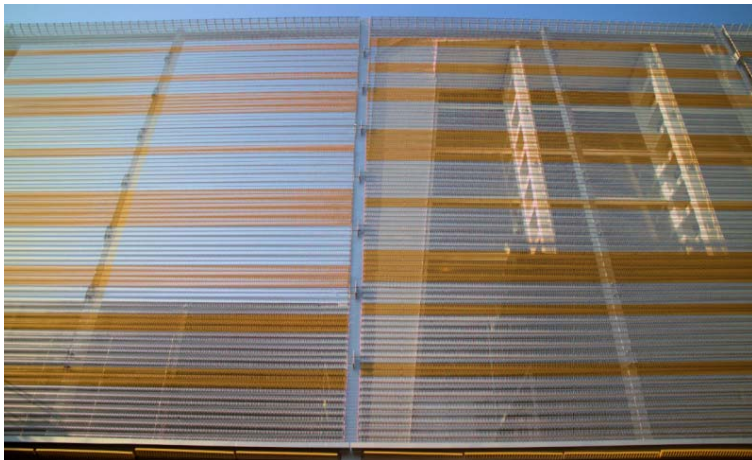
WORLD WIDE WEAVE



Picture 1: Dominique Perrault gave Pavilion 1 of the Paris Expo Porte de Versailles exhibition center a new face with a 240-meter-long façade made of GKD stainless steel fabric of the type Escale.



Picture 2: The up to 20.5-meter-high façade made of stainless steel mesh panels of the type Escale from GKD are fastened to a steel construction made from narrow steel struts several meters in front of the actual façade.



Picture 3: Dominique Perrault had a third of the stainless steel spirals from GKD coated gold and distributed in seemingly random lines across the surface of the fabric.



Picture 4: The transparency of the Escale spiral mesh from GKD allows an unencumbered view of outside.

Picture 1-4 © GKD

We will be happy to send you the desired images in printable resolution by e-mail.

These images are meant exclusively for use in connection with this particular press release on the company GKD – GEBR. KUFFERATH AG. Any other use beyond this expressed purpose, especially use in connection with other companies, is strictly prohibited.

impetus.PR

Agentur für Corporate Communications GmbH

Ursula Herrling-Tusch

Charlottenburger Allee 27-29

D-52068 Aachen

Tel: +49 [0] 241 / 1 89 25-10

Fax: +49 [0] 241 / 1 89 25-29

E-Mail: herrling-tusch@impetus-pr.de