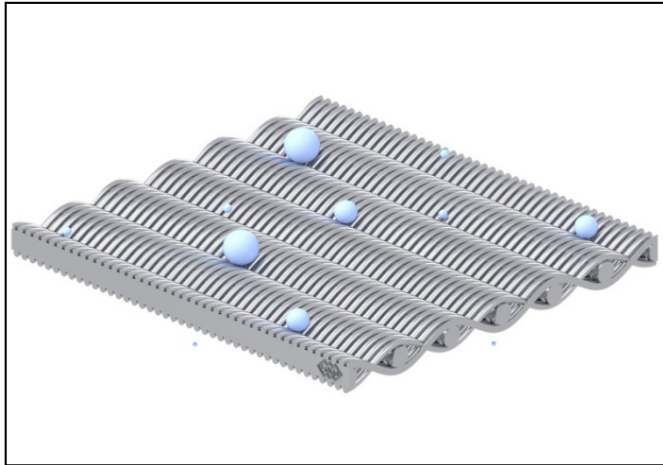


Efficiency on the test bench

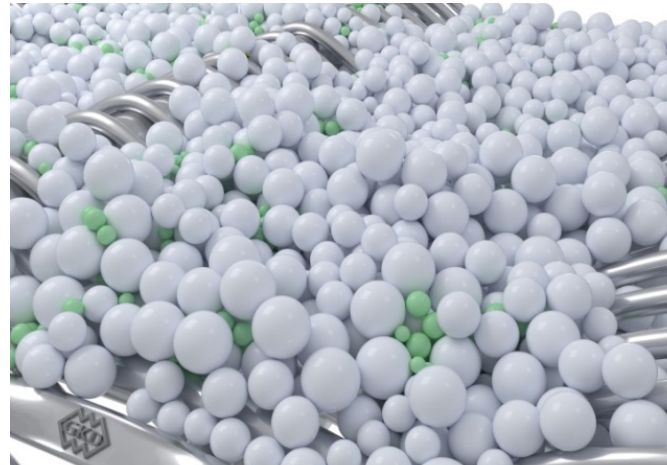
KIT: Maximum cleaning performance with minimum use of filtrate



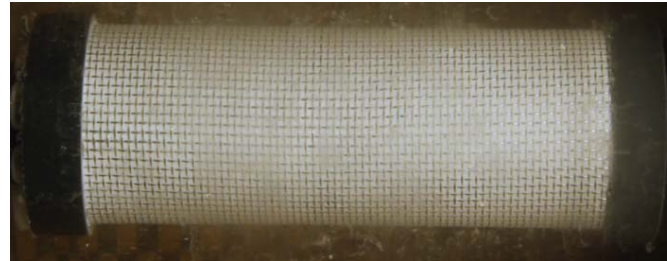
WORLD WIDE WEAVE



Picture 1: Optimized dutch weaves made of stainless steel from GKD do not bulge at mesh sizes $< 10 \mu\text{m}$ and exceed the tested meshes in terms of backwashing rate and cleaning quality.



Picture 2: As a result of the high porosity both good filtration properties and a very good regeneration performance were observed.



Picture 3-5: Cleaning behaviour of optimized dutch weaves from GKD in test.

Picture 1-2 © GKD

Picture 3-10 © Patrick Morsch

We will be happy to send you the desired images in printable resolution by e-mail.

These images are meant exclusively for use in connection with this particular press release on the company GKD – GEBR. KUFFERATH AG. Any other use beyond this expressed purpose, especially use in connection with other companies, is strictly prohibited.

impetus.PR

Agentur für Corporate Communications GmbH

Ursula Herrling-Tusch

Charlottenburger Allee 27-29

D-52068 Aachen

Tel: +49 [0] 241 / 1 89 25-10

Fax: +49 [0] 241 / 1 89 25-29

E-Mail: herrling-tusch@impetus-pr.de

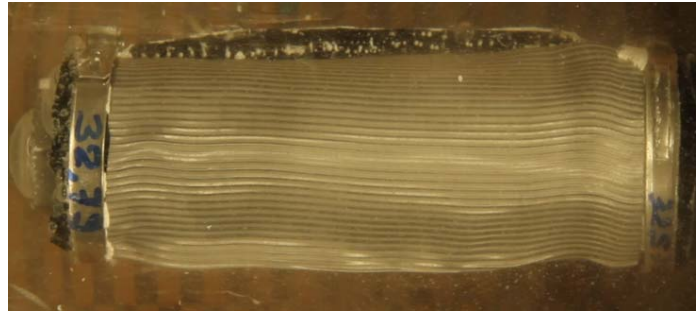
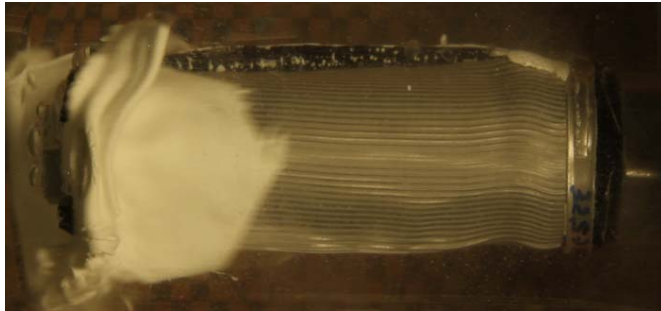
GKD – GEBR. KUFFERATH AG, Düren

Efficiency on the test bench

KIT: Maximum cleaning performance with minimum use of filtrate



WORLD WIDE WEAVE



Picture 6-9: Cleaning behaviour of the Porometric mesh from GKD in test.

Picture 1-2 © GKD

Picture 3-10 © Patrick Morsch

We will be happy to send you the desired images in printable resolution by e-mail.

These images are meant exclusively for use in connection with this particular press release on the company GKD – GEBR. KUFFERATH AG. Any other use beyond this expressed purpose, especially use in connection with other companies, is strictly prohibited.

impetus.PR

Agentur für Corporate Communications GmbH

Ursula Herrling-Tusch

Charlottenburger Allee 27-29

D-52068 Aachen

Tel: +49 [0] 241 / 1 89 25-10

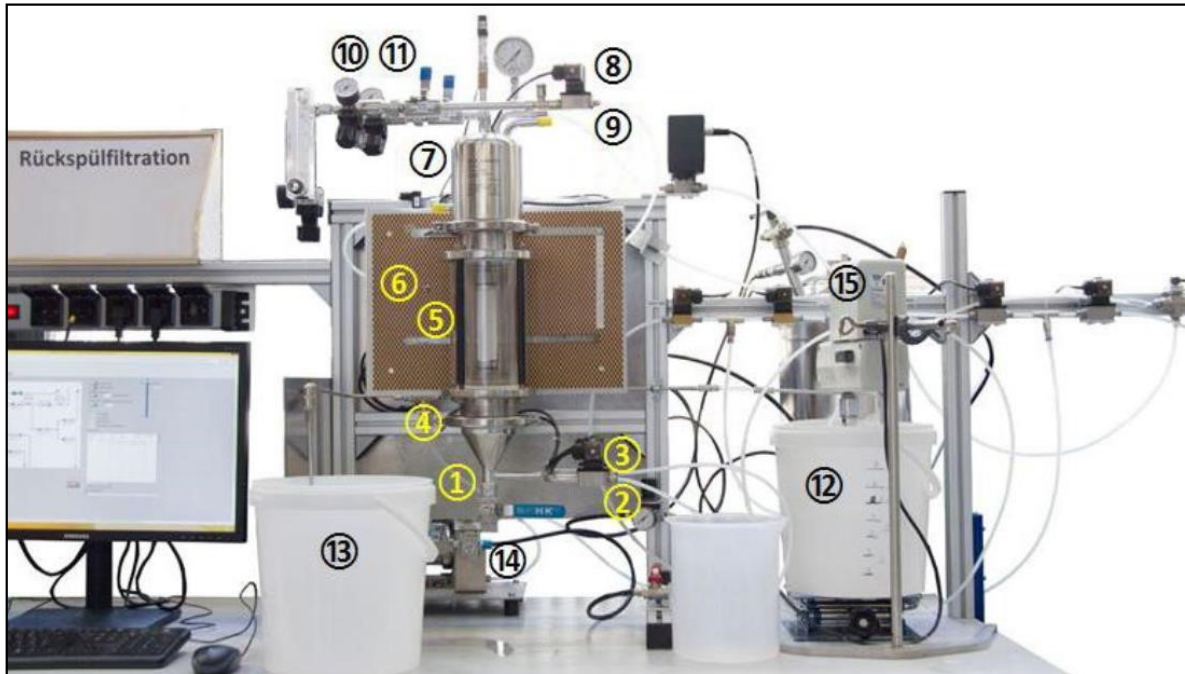
Fax: +49 [0] 241 / 1 89 25-29

E-Mail: herrling-tusch@impetus-pr.de

GKD – GEBR. KUFFERATH AG, Düren

Efficiency on the test bench

KIT: Maximum cleaning performance with minimum use of filtrate



Picture 10:

- | | |
|--|---|
| 1 = Drain sleeve | 10 = Tube in which the gas for providing the impulse for the regeneration flows |
| 2 = Infeed into the glass cylinder | 11 = Tube for performing drying |
| 3 = Tube for performing the backwash | 12 = Container for the suspension consisting of tap water and particle system |
| 4 = Bottom end of the filter | 13 = Clear water container |
| 5 = Glass cylinder | 14 = Double membrane pump |
| 6 = Contrast plate with LED lamps and scale | 15 = Agitator |
| 7 = Head connection of the laboratory filter | |
| 8 = Filtrate outlet | |
| 9 = Overflow | |



WORLD WIDE WEAVE

Picture 1-2 © GKD

Picture 3-10 © Patrick Morsch

We will be happy to send you the desired images in printable resolution by e-mail.

These images are meant exclusively for use in connection with this particular press release on the company GKD – GEBR. KUFFERATH AG. Any other use beyond this expressed purpose, especially use in connection with other companies, is strictly prohibited.

impetus.PR

Agentur für Corporate Communications GmbH

Ursula Herrling-Tusch

Charlottenburger Allee 27-29

D-52068 Aachen

Tel: +49 [0] 241 / 1 89 25-10

Fax: +49 [0] 241 / 1 89 25-29

E-Mail: herrling-tusch@impetus-pr.de

GKD – GEBR. KUFFERATH AG, Düren