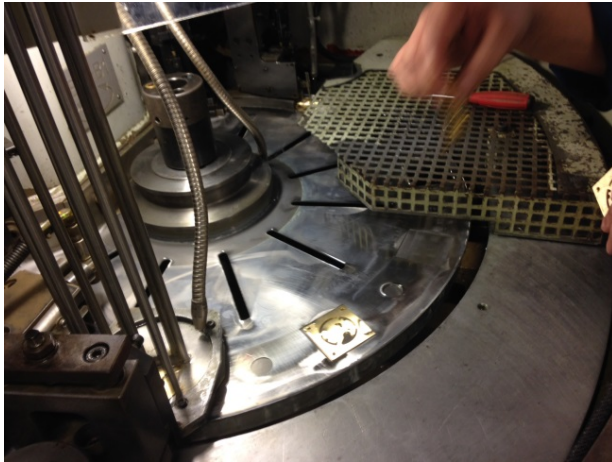


Manufacturing with clockwork precision

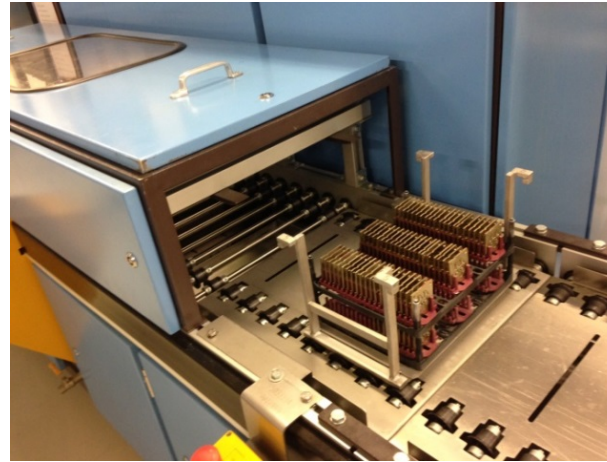
MAXFLOW Compact Filter System in the luxury watch industry



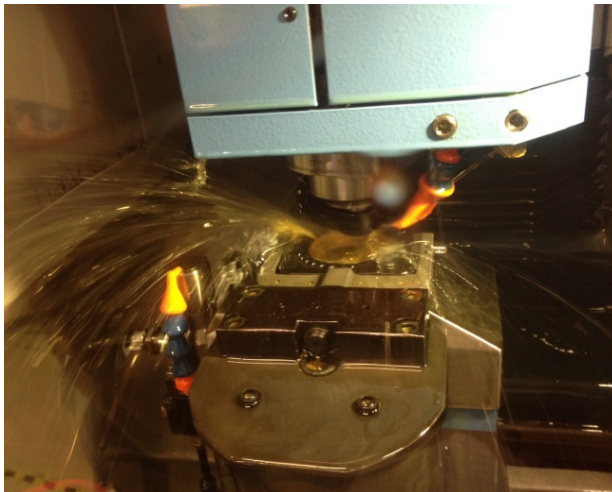
WORLD WIDE WEAVE



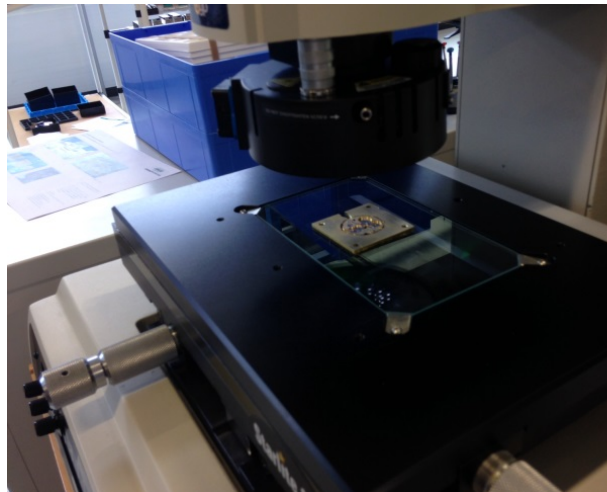
Picture 1: Each platine will have gone through up to five grinding passes in the double-disk grinder.



Picture 2: To give them a uniform surface finish, all the platines are bead blasted, and oil and swarf are removed in a washing line before further processing.



Picture 3: After each work stage – machining, milling, drilling – a new grinding pass is required in which the platines are face ground in a double disk grinding machine to the respective depth.



Picture 4: A computer-controlled inspection unit conducts three-dimensional measurements to ensure that all finishing details have been accomplished to the required level of precision.

GKD – GEBR. KUFFERATH AG, Düren

Picture 1-10 © GKD

We will be happy to send you the desired images in printable resolution by e-mail.

These images are meant exclusively for use in connection with this particular press release on the company GKD. Any other use beyond this expressed purpose, especially use in connection with other companies, is strictly prohibited.

impetus.PR

Agentur für Corporate Communications GmbH

Ursula Herrling-Tusch

Charlottenburger Allee 27-29

D-52068 Aachen

Tel: +49 [0] 241 / 1 89 25-10

Fax: +49 [0] 241 / 1 89 25-29

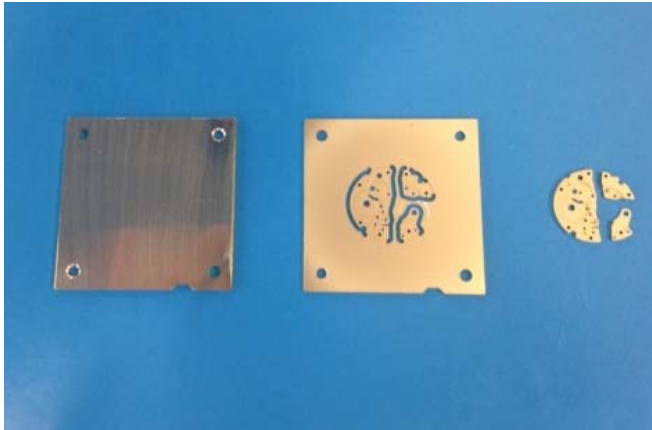
E-Mail: herrling-tusch@impetus-pr.de

Manufacturing with clockwork precision

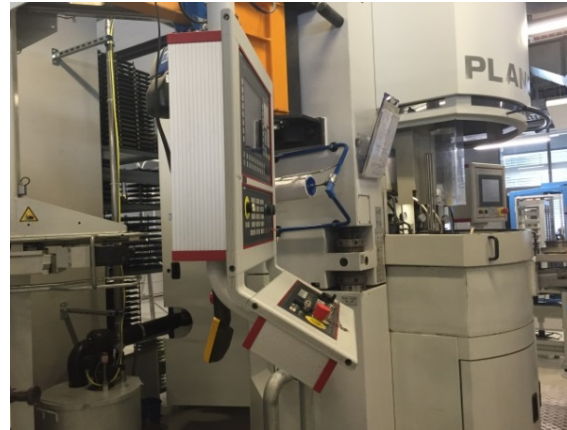
MAXFLOW Compact Filter System in the luxury watch industry



WORLD WIDE WEAVE



Picture 5: The perfectly dimensioned round platine is milled out of the rectangular form of the original platine.



Picture 6: The platines are automatically transported from the various processing zones to the grinding machine in small trays.



Picture 7: The compact filter system MAXFLOW CS 1000 combines filtration and Filtration und briquetting in one plant.



Picture 8: The filter discs are fitted with process-customised multi-dimensional YMAX® type mesh and vertically installed in the filter head.

Picture 1-10 © GKD

We will be happy to send you the desired images in printable resolution by e-mail.

These images are meant exclusively for use in connection with this particular press release on the company GKD. Any other use beyond this expressed purpose, especially use in connection with other companies, is strictly prohibited.

impetus.PR

Agentur für Corporate Communications GmbH

Ursula Herrling-Tusch

Charlottenburger Allee 27-29

D-52068 Aachen

Tel: +49 [0] 241 / 1 89 25-10

Fax: +49 [0] 241 / 1 89 25-29

E-Mail: herrling-tusch@impetus-pr.de

Manufacturing with clockwork precision

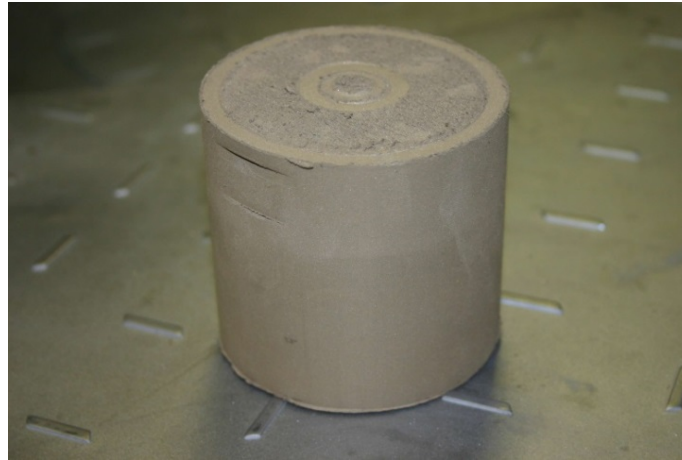
MAXFLOW Compact Filter System in the luxury watch industry



WORLD WIDE WEAVE



Picture 9: Automatic backwashing detaches the filter cake of milling waste.



Picture 10: The filter cake is pressed into dry briquets and ready for easy disposal.

Picture 1-10 © GKD

We will be happy to send you the desired images in printable resolution by e-mail.

These images are meant exclusively for use in connection with this particular press release on the company GKD. Any other use beyond this expressed purpose, especially use in connection with other companies, is strictly prohibited.

impetus.PR

Agentur für Corporate Communications GmbH

Ursula Herrling-Tusch

Charlottenburger Allee 27-29

D-52068 Aachen

Tel: +49 [0] 241 / 1 89 25-10

Fax: +49 [0] 241 / 1 89 25-29

E-Mail: herrling-tusch@impetus-pr.de