

# GKD: Metal mesh encapsulates gateway to the Campus Melaten

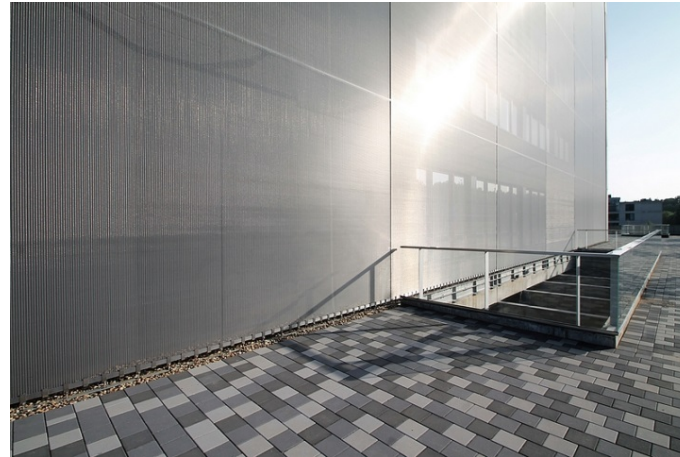
New Center for Teaching and Training in the Aachener Bio-Medical Engineering Cluster



WORLD WIDE WEAVE

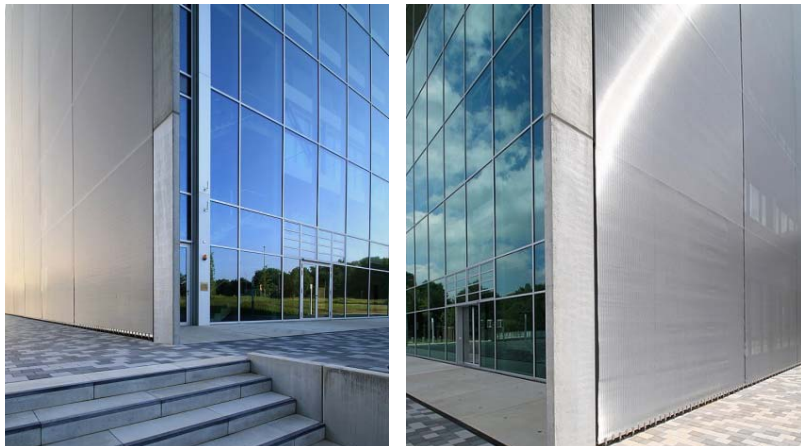


Picture 1: sop architects designed a cube, which, thanks to its fully glazed upper façades, has the appearance of a gigantic gateway to the campus.



Picture 2: The stainless steel shell from GKD serves as solar protection that reduces the surface temperature of the façade.

Picture 1-5 © GKD



Picture 3-4: Interacting with the glass façades, the woven membrane from GKD facilitates communication between the interior and exterior.



Picture 5: The lateral façades are spanned by a shimmering skin made of metallic mesh that creates a visually seamless surface.

We will be happy to send you the desired images in printable resolution by e-mail.

These images are meant exclusively for use in connection with this particular press release on the company GKD – GEBR. KUFFERATH AG. Any other use beyond this expressed purpose, especially use in connection with other companies, is strictly prohibited.

**impetus.PR**  
Agentur für Corporate Communications GmbH

Ursula Herrling-Tusch  
Charlottenburger Allee 27-29  
D-52068 Aachen  
Tel: +49 [0] 241 / 1 89 25-10  
Fax: +49 [0] 241 / 1 89 25-29  
E-Mail: herrling-tusch@impetus-pr.de