

Return of a cult symbol

MEDIAMESH® brings faces to life



WORLD WIDE WEAVE



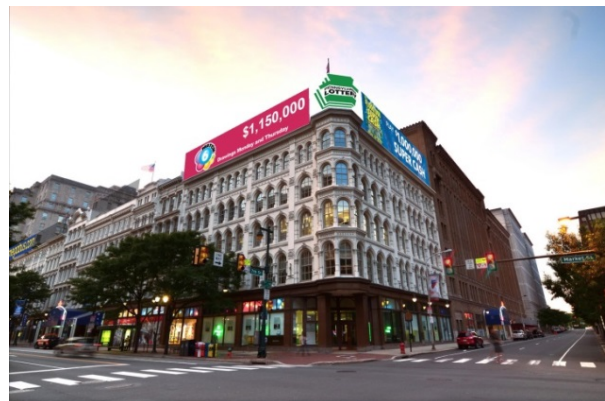
Picture 1: The transparent MEDIAMESH® media facade system by GKD has injected new life into a cult building in Philadelphia.



Picture 2: The MEDIAMESH® system by GKD, made of stainless steel mesh with integrated LED profiles, is characterized by its particularly low power consumption and the robust stainless steel material is 100 percent recyclable at the end of its useful life after many decades.



Picture 3: Standing 4.4 meters tall and 110 meters wide, the transparent display in place on the roof of the Mellon Independence Center is the first MEDIAMESH® installation in Philadelphia.



Picture 4: The large MEDIAMESH® screen, which boasts a total area of approximately 480 square meters, is made up of 37 panels with vertical LED spacing of 4cm and horizontal spacing of 4.25cm.

Pictures 1-4 © GKD/A2a Media LLC

We will be happy to send you the desired images in printable resolution by e-mail.

These images are meant exclusively for use in connection with this particular press release on the company GKD – GEBR. KUFFERATH AG. Any other use beyond this expressed purpose, especially use in connection with other companies, is strictly prohibited.

impetus.PR

Agentur für Corporate Communications GmbH

Ursula Herrling-Tusch

Charlottenburger Allee 27-29

D-52068 Aachen

Tel: +49 [0] 241 / 1 89 25-10

Fax: +49 [0] 241 / 1 89 25-29

E-Mail: herrling-tusch@impetus-pr.de